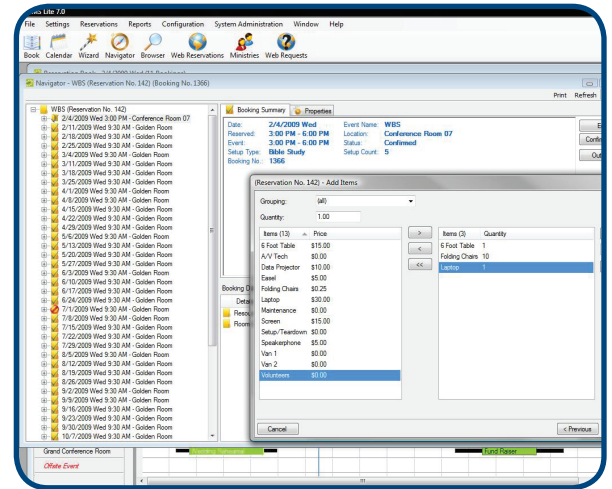


**EMS LITE™ RESOURCE MODULE**

This optional module for EMS Lite allows you to define, group and track resources such as audio visual equipment, furniture, food, etc. When a user selects inventoried resources for a booking, the system assesses availability and issues a warning if the item will be overbooked. Resource requirements are printed on Confirmations, the Setup Worksheet and a Resource Schedule report.

If you need to manage separate pools of inventory, multiple service times within a booking or outside service providers, you should consider EMS Professional™ or EMS Enterprise™, both of which include more sophisticated functionality for services and additional options for delineating resource inventories.



**EMS LITE™ BILLING MODULE**

The EMS Lite Billing Module allows you to define standard pricing for rooms and resources (requires the Resources Module), extends and prints a grand total of charges on the Confirmation, and provides a printed Invoice for your customers. A Billing Reference field makes it easy to track charge codes on each reservation while the Sales by Billing Reference report facilitates the processing of charge backs.

If you need multiple pricing plans, automatic calculations or complete accounts receivable (including deposit and payment tracking, ageing report and statements), you should look at either EMS Professional or EMS Enterprise.

Lite 303-678-0567 / 1-800-334-5678			
Confirmation Title			
<b>Ministry</b>	<b>Reservation:</b>	142	
Steve Smith	Event Name:	WBS	
Women's Ministry	Phone:	303-555-6291	
3490 Front St	Fax:	303-555-8712	
Castle Rock, CO 80108	Event Type:	Bible Study	
	Billing Reference:	178-1	
<b>Bookings / Details</b>	<b>Quantity</b>	<b>Price</b>	<b>Amount</b>
<i>Thank you for submitting your event through Virtual EMS. Please review the event information below to verify its accuracy.</i>			
<b>Wednesday, February 04, 2009</b>			
<b>3:00 PM - 6:00 PM WBS (Confirmed) Conference Room 07</b>			
Bible Study for 5			
Room Charge:	1	\$80.00	\$80
<b>Resources:</b>			
Laptop	1	\$30.00	\$30
6 Foot Table	1	\$15.00	\$15
<i>test some notes</i>			
Folding Chairs	10	\$0.25	\$2
<i>metal not wooden</i>			
	Subtotal		\$127
	Grand Total		\$127
<small>Members are responsible for cancelling their own registrations online, which automatically issues the stated refund.</small>			