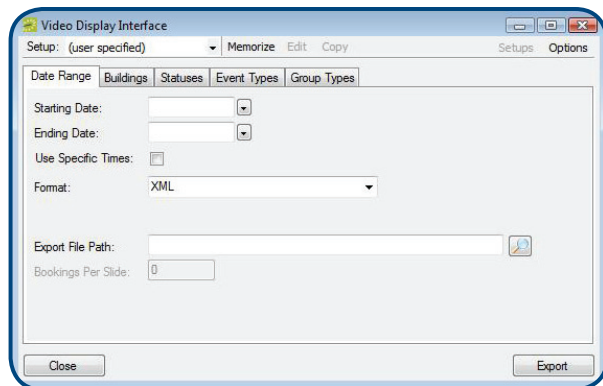


Imagine the convenience of automatically displaying your EMS schedule of events on digital signage throughout your facility.

By adding the Video Display Interface (VDI) to your EMS system, and using it to interface with one of many popular digital signage systems on the market today (refer to <http://www.dea.com/Company/Partners.aspx>), you can do exactly that. There is even an option to export scheduling data into XML, Microsoft Excel® and Microsoft Powerpoint® formats.

Although we do not sell digital signage hardware, we would be happy to discuss your needs and point you in the right direction. Please consult with your digital signage vendor of choice to verify compatibility with your version of EMS software, and to confirm their method of integration as some vendors do not require the VDI module for integration.



Date	Start	End	Event Name	Room
9/4/2009	8:00 am	4:00 pm	BCA Classes	Classroom
9/4/2009	8:00 am	11:00 am	Senior Aerobics	Gym 2
9/4/2009	10:00 am	12:00 pm	Staff Meeting	Annex Con
9/4/2009	10:00 am	11:00 am	Morning Worship	Auditorium
9/4/2009	11:00 am	1:00 pm	Math	Classroom
9/4/2009	1:00 pm	2:00 pm	Pastor's Meeting	Conference
9/4/2009	3:00 pm	5:00 pm	Board Meeting	Executive C
9/4/2009	3:00 pm	5:00 pm	YMCA Afterschool	Classroom
9/4/2009	3:00 pm	5:00 pm	YMCA Afterschool	Classroom
9/4/2009	3:00 pm	5:00 pm	YMCA Afterschool	Gym 1
9/5/2009	1:00 pm	2:00 pm	Pastor's Meeting	Conference
9/6/2009	1:00 pm	2:00 pm	Pastor's Meeting	Conference
9/7/2009	8:00 am	4:00 pm	BCA Classes	Classroom
9/7/2009	8:00 am	11:00 am	Senior Aerobics	Gym 2
9/7/2009	10:00 am	12:00 pm	Staff Meeting	Annex Con
9/7/2009	10:00 am	11:00 am	Morning Worship	Auditorium
9/7/2009	11:00 am	1:00 pm	Math	Classroom

User-friendly interface gives you just the data you need

FEATURES AND BENEFITS

- Export data into easy-to-use formats
- Accessible information keeps everyone “in the know”
- Use exported data in a wide variety of applications
- Scheduled updating ensures displayed information is timely and accurate